

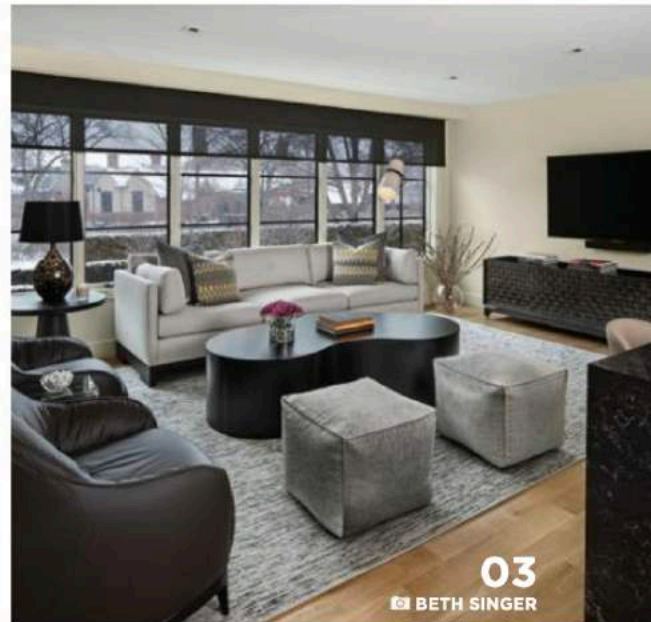
GUEST SUITE



01
JAMES HAEFNER



02
BETH SINGER



03
BETH SINGER

01 DESROSIERS ARCHITECTS with HEARTWOOD CUSTOM BUILDERS

Two generous private and cozy guest suites are part of this exquisite timber home. The cathedral ceilings are supported by white oak beams with tongue-and-groove white oak boards. The walls are paneled with natural white cedar boards, and the arched bay windows are trimmed out with white oak encasing. One cozy window is the perfect place for reading; the second bay window reveals a wonderful lake view.

02 COTTAGE COMPANY INTERIORS with COTTAGE COMPANY OF HARBOR SPRINGS

03 ANN-MARIE ANTON FOR IT'S PERSONAL DESIGN

KITCHEN (BETWEEN 201-500 SQUARE FEET)



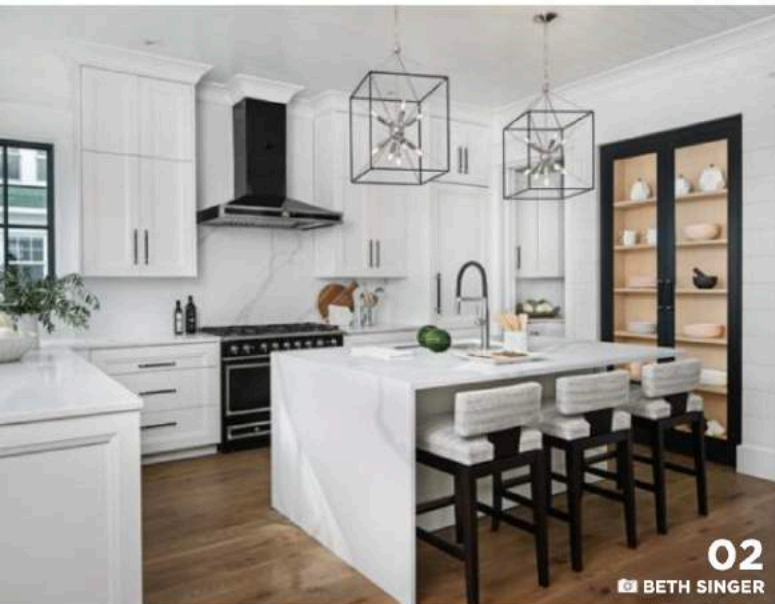
01

MEGHAN LABRA

“
Judge’s Insights

This kitchen by Labra Design Build should be what you see when you look up ‘Mid-century Modern kitchen.’ It’s the perfect embodiment of the style.

— Judge Kayla Cooper



02

BETH SINGER



03

MARTIN VECCHIO

01 LABRA DESIGN BUILD

The challenge: Remodel a kitchen in a Mid-century Modern quad-level. A load-bearing column in the middle of the room anchors the island; duplicating the column created a space for open shelving between the kitchen and dining space. Existing beams were refinished to blend with the new ceiling, which extends into the exterior overhangs. Breeze block screens the foyer from the kitchen and defines the breakfast nook.

02 COTTAGE COMPANY INTERIORS
with COTTAGE COMPANY OF HARBOR
SPRINGS

03 JOHNSON CUSTOM HOMES

TRADITIONAL INTERIOR DESIGN (MORE THAN ONE ROOM)



“
Judge’s Insights

I love the millwork in this home (by Jessica Neeper Interiors at Brian Neeper Architecture, PC with Dayna Flory Interiors).

— Judge Jamie Herzlinger

01 JESSICA NEEPER INTERIORS AT BRIAN NEEPER ARCHITECTURE, PC with DAYNA FLORY INTERIORS
A light palette connects this home’s interiors. The bones of the project include extensive trim, millwork, custom built-ins, and molding. The home exudes rich detail throughout in an understated elegance, while maintaining the casual livability needed in a family home. The expansive, welcoming kitchen can hold a crowd, and guests are sure to have fun in the natatorium or enjoy relaxing in the great room.

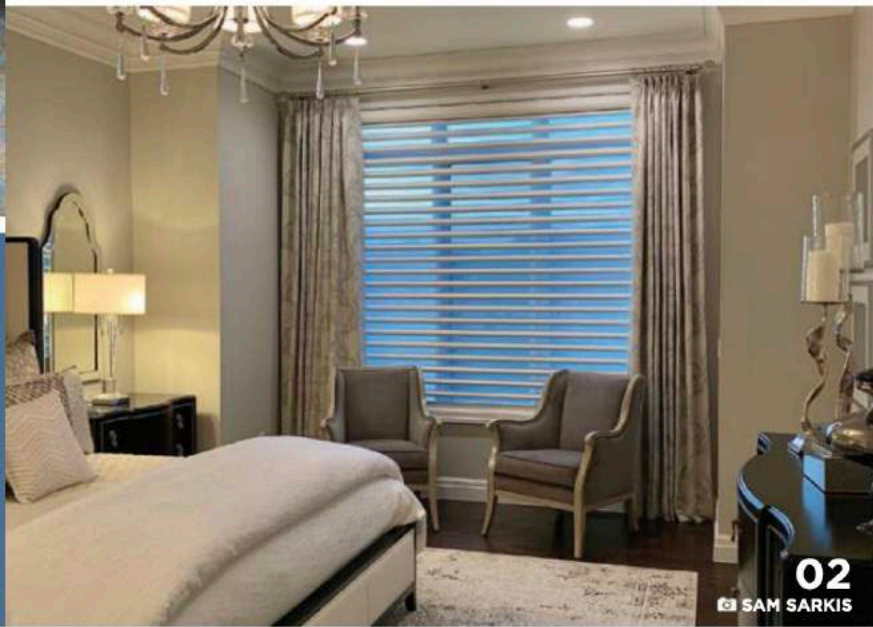
02 VANBROUCK | LUXE HOMES with OLIVER MAX INC.

03 COTTAGE COMPANY INTERIORS with COTTAGE COMPANY OF HARBOR SPRINGS

WINDOW TREATMENT



01
 CAITLIN BURT



02
 SAM SARKIS



03
 BETH SINGER

01 CREATIVE WINDOWS
 At nearly 14 feet wide, this window presented a unique design challenge: How to provide proper scale to the window treatment without overpowering the view and dampening natural light? The final design features a multilayered fabric treatment. The layers provide a softness that's juxtaposed against the wood walls; the fabrics and trim blend traditional grandeur with a whimsical airiness and pop of color.

02 MARIELLA'S CUSTOM DRAPERIES

03 COTTAGE COMPANY INTERIORS with COTTAGE COMPANY OF HARBOR SPRINGS

NEW MODEL HOME (ARCHITECTURE)



01

BETH SINGER

“
Designers’ Goals

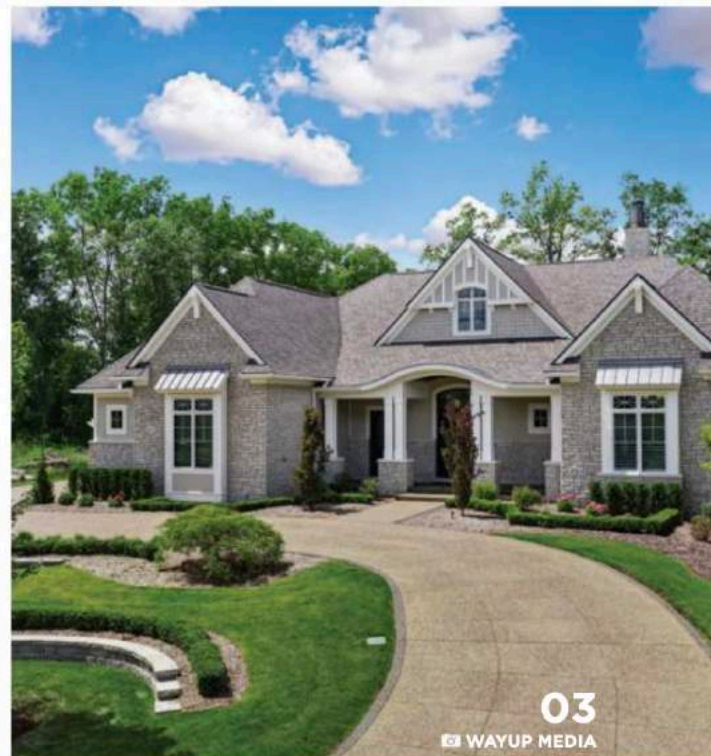
This stunning, transitional model Ranch home was largely designed with a couple in mind, looking to downsize, while still maintaining a large, open living space.

— KSI Kitchen & Bath with Mocerri Homes



02

MARTIN VECCHIO



03

WAYUP MEDIA

01 COTTAGE COMPANY INTERIORS with COTTAGE COMPANY OF HARBOR SPRINGS

A six-bedroom, six-bathroom home located along Harbor Springs’ historic waterfront features 6,800 square feet of indoor/outdoor living space, a rooftop deck with an outdoor kitchen and fireplace, a hydraulic elevator, and a walk-out lower level with a covered patio, water views, and bike garage. It also includes two linear fireplaces, a chef’s kitchen, extensive millwork with period-correct architectural detailing, and energy-efficient sustainable design.

02 KSI KITCHEN & BATH with MOCERI HOMES

03 MOCERI HOMES